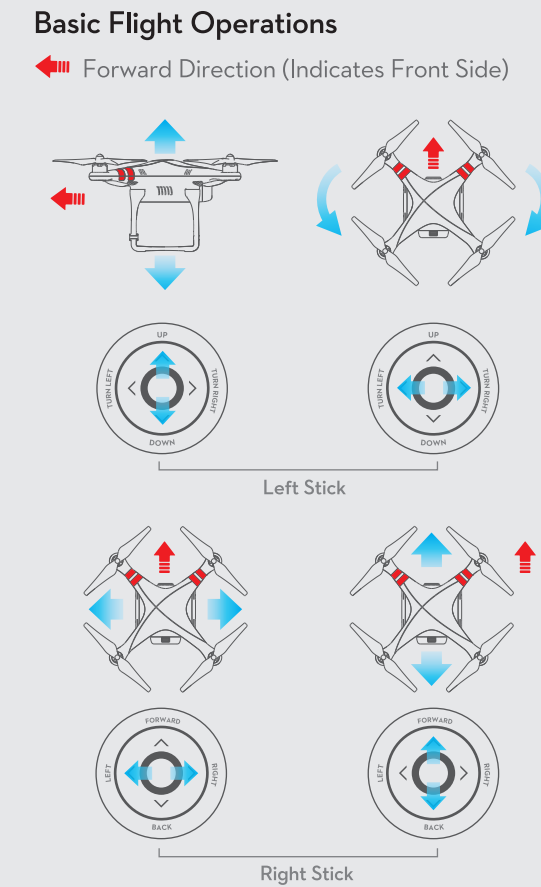
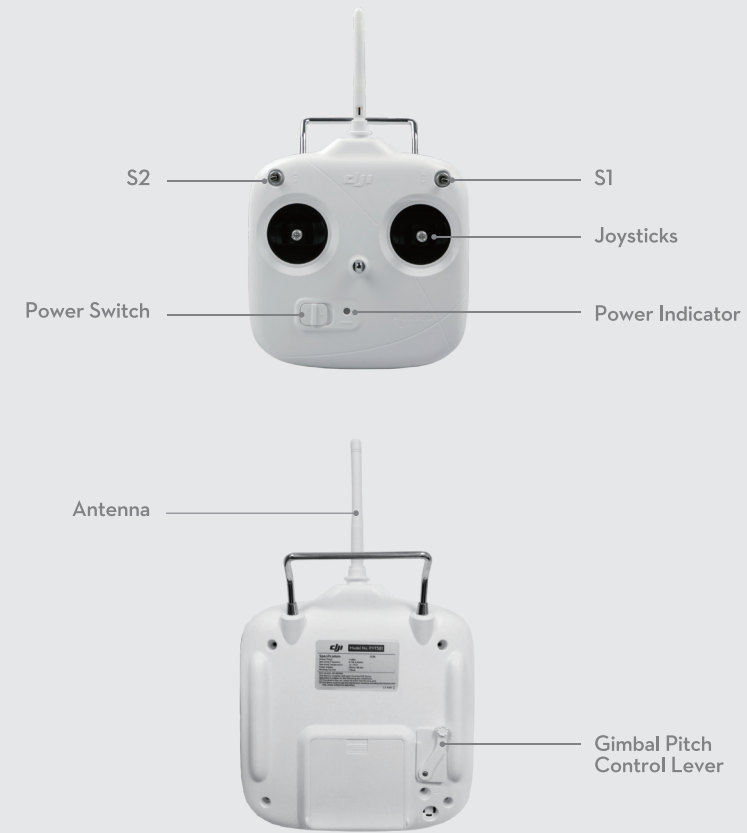


PHANTOM 2

QUICK START GUIDE

Learn More : www.dji.com



PHANTOM 2

QUICK START GUIDE

0

Scan QR Code to Watch the Quick Start Video or browse direct to www.dji.com/tutorial/phantom-2-tutorial/



- ① Product Introduction
- ② Quick Start Guide
- ③ H3-2D Gimbal Assembly

⚠ ATTENTION: For SAFETY reasons and for further flight instruction, it is advised that you watch the videos above in full before attempting to use the Phantom 2.

1

ATTACHING THE PROPELLERS

- > Remove the four warning cards from the motors.
- > Screw the propellers, clockwise for grey nuts and anti-clockwise for black nuts, onto the four motors. Be sure to match the black propeller nuts with the black dot motors.

⚠ ATTENTION: DO NOT use thread lock on the propeller shafts.



2

SETUP OF THE ZENMUSE H3-2D GIMBAL (OPTIONAL)

- > The ZENMUSE H3-2D gimbal is recommended for a better aerial photography experience. The installation is quick and convenient, as the GCU and other control interfaces have been built into the Phantom 2. Please refer to the "H3-2D Gimbal Quick Start Guide" for more details.



3

PREPARING THE REMOTE CONTROLLER

- > Be sure S1 and S2 are switched to the upper most position.
 - > Install 4 x AA batteries into the back of the Remote Controller.
- ⚠ ATTENTION: A continuous beeping sound emitted from the Remote Controller indicates LOW BATTERY VOLTAGE.



4

TURNING THE FLIGHT BATTERY ON/OFF

- > Press the circular button once, then press and hold for 2 seconds to turn on the flight battery.
- > Press the circular button once, then press and hold for 2 seconds to turn off the flight battery.

⚠ ATTENTION: Pressing the circular button once with no further action will indicate current BATTERY LEVEL.



5

LED FLIGHT INDICATORS

- > Slow green flashing indicates ready to fly with GPS.
- > Slow yellow flashing indicates ready to fly without GPS.
- > Fast yellow flashing indicates your Remote Controller is switched off.
- > Fast red flashing indicates low flight battery level.
- > Please refer to the card attached to the Remote Controller for more details.

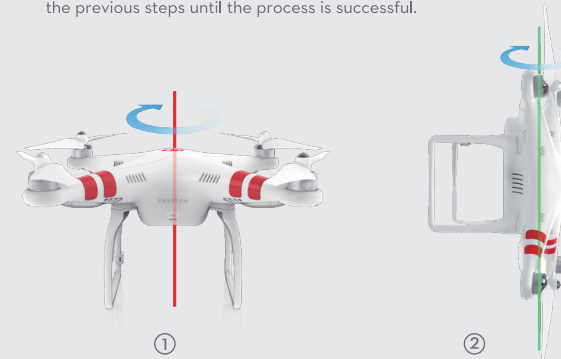


6

CALIBRATING THE COMPASS

- > Rapidly flip the S1 switch from the 'fully up' to the 'fully down' positions for at least 6 times.
- > Once the LED Flight Indicators change to display solid yellow, the compass calibration mode has been initiated.
- > Holding the Phantom 2 horizontally, rotate it 360° on its center axis until the LED Flight Indicators switch to solid green.
- > Then while holding the Phantom 2 vertically, rotate 360° on its center axis until the LED Flight Indicators light disappears.

⚠ ATTENTION: If the LED Flight Indicators flash between yellow and red, then the process has FAILED. You must start over and repeat the previous steps until the process is successful.

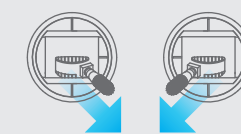


7

BEGINNING YOUR FIRST FLIGHT

- > Start by placing the Phantom 2 on the ground with the Battery Level Indicator lights facing yourself.
- > Switch on the Remote Controller.
- > Turn on the flight battery.
- > Pull both sticks on the remote controller to bottom corners as shown to start/stop the motors.
- > Start flying.

⚠ ATTENTION: ONLY stop the motors after the Phantom 2 has landed, DO NOT stop the motors during flight!



Start/Stop Motors

